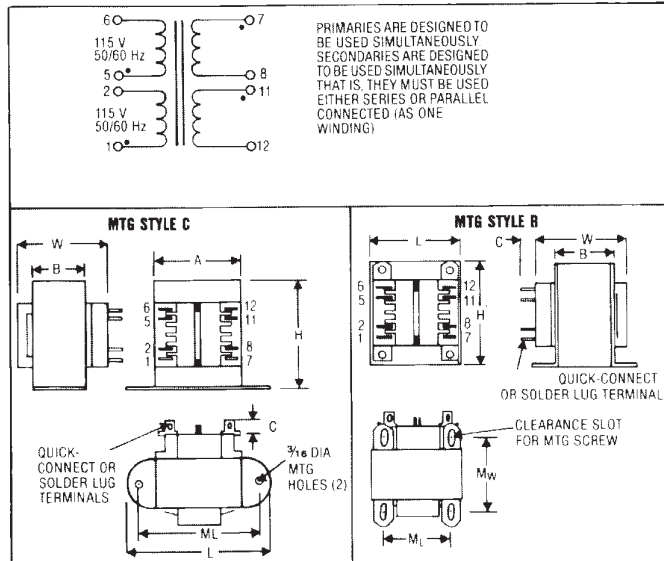
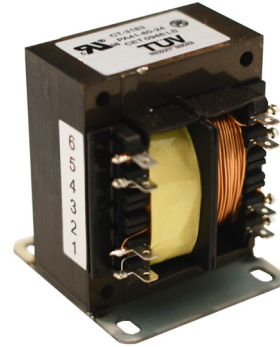


Chassis Mount Type

FEATURES

- The CET international chassis mount series is designed and built to meet U.S. and international safety standards: EN60950, UL-1950, and CSA22.2NO. 950
- Built with dual bobbins with insulating shrouds to provide 4000VRMS isolation between primary and secondary
- UL recognized File #146472
- Approved to CSA 22.2 No. 66
- TUV approved
- Class B insulation 130° C
- Custom versions also available



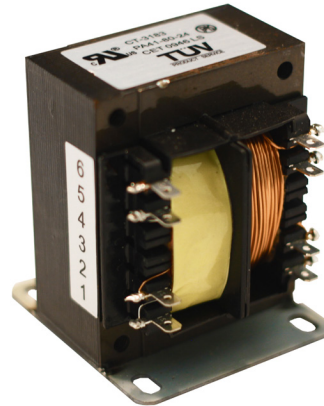
Part No.	VA (Size)	Secondary RMS Rating	
		Series	Parallel
PA41-25-10	25	10V C.T. @ 2.5A	5V @ 5.0A
PA41-43-10	43	10V C.T. @ 4.3A	5V @ 8.6A
PA41-80-10	80	10V C.T. @ 8.0A	5V @ 16.0A
PA41-130-10	130	10V C.T. @ 13.0A	5V @ 26.0A
PA41-175-10	175	10V C.T. @ 17.5A	5V @ 35.0A
PA41-25-12	25	12.6V C.T. @ 2.0A	6.3V @ 4.0A
PA41-43-12	43	12.6V C.T. @ 3.4A	6.3V @ 6.8A
PA41-80-12	80	12.6V C.T. @ 6.3A	6.3V @ 12.6A
PA41-130-12	130	12.6V C.T. @ 10.3A	6.3V @ 20.6A
PA41-175-12	175	12.6V C.T. @ 14.0A	6.3V @ 28.0A
PA41-25-16	25	16V C.T. @ 1.6A	8V @ 3.2A
PA41-43-16	43	16V C.T. @ 2.7A	8V @ 5.4A
PA41-80-16	80	16V C.T. @ 5.0A	8V @ 10.0A
PA41-130-16	130	16V C.T. @ 8.1A	8V @ 16.2A
PA41-175-16	175	16V C.T. @ 11.0A	8V @ 22.0A
PA41-25-20	25	20V C.T. @ 1.25A	10V @ 2.5A
PA41-43-20	43	20V C.T. @ 2.2A	10V @ 4.4A
PA41-80-20	80	20V C.T. @ 4.0A	10V @ 8.0A
PA41-130-20	130	20V C.T. @ 6.5A	10V @ 13.0A
PA41-175-20	175	20V C.T. @ 8.8A	10V @ 17.6A
PA41-25-24	25	24V C.T. @ 1A	12V @ 2A
PA41-43-24	43	24V C.T. @ 1.8A	12V @ 3.6A
PA41-80-24	80	24V C.T. @ 3.3A	12V @ 6.6A
PA41-130-24	130	24V C.T. @ 5.4A	12V @ 10.8A
PA41-175-24	175	24V C.T. @ 7.3A	12V @ 14.6A
PA41-25-28	25	28V C.T. @ 0.9A	14V @ 1.86A
PA41-43-28	43	28V C.T. @ 1.5A	14V @ 3.0A
PA41-80-28	80	28V C.T. @ 2.8A	14V @ 5.6A
PA41-130-28	130	28V C.T. @ 4.6A	14V @ 9.2A
PA41-175-28	175	28V C.T. @ 6.25A	14V @ 12.5A
PA41-25-36	25	36V C.T. @ 0.7A	18V @ 1.4A
PA41-43-36	43	36V C.T. @ 1.2A	18V @ 2.4A
PA41-80-36	80	36V C.T. @ 2.2A	18V @ 4.4A
PA41-130-36	130	36V C.T. @ 3.6A	18V @ 7.2A
PA41-175-36	175	36V C.T. @ 4.8A	18V @ 9.6A
PA41-25-230	25	230V C.T. @ 0.11A	115V @ 0.22A
PA41-43-230	43	230V C.T. @ 0.19A	115V @ 0.38A
PA41-80-230	80	230V C.T. @ 0.35A	115V @ 0.7A
PA41-130-230	130	230V C.T. @ 0.57A	115V @ 1.14A
PA41-175-230	175	230V C.T. @ 0.76A	115V @ 1.52A

VA	Dimensions						Terminals	Mtg. Style	Mtg. ML	Mtg. MW.	Screw	Lbs.
	L	W	H	A	B	C						
25	213/16	17/8	25/16	2	11/8	5/16	3/16(.187)	C	23/8	—	#6	1.25
43	31/8	21/16	211/16	21/4	11/8	5/16	3/16(.187)	C	213/16	—	#6	1.6
80	21/2	23/8	3	—	13/8	5/16	3/16(.187)	B	2	23/16	#6	2.8
130	213/16	27/8	33/8	—	15/8	3/8	1/4(0.25)	B	21/4	21/2	#8	4.1
175	31/8	27/8	33/4	—	15/8	3/8	1/4(0.25)	B	21/2	21/2	#8	5.5

Chassis Mount Type

FEATURES

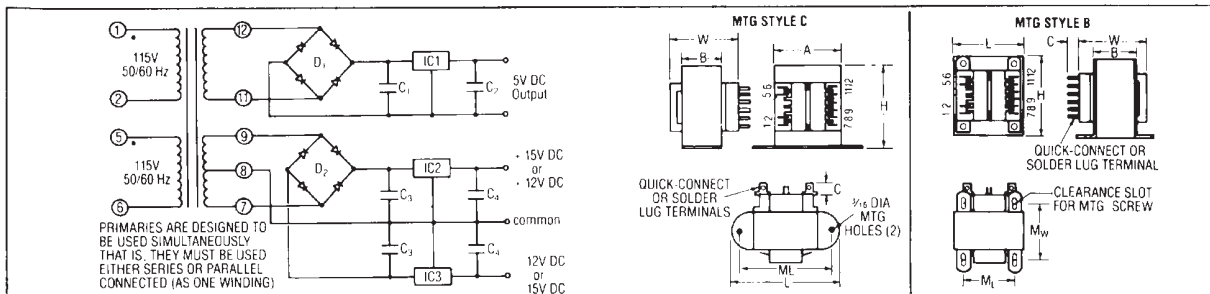
- The CET chassis mount series for triple output regulated supplies in (μ P) applications
- Dual complementary outputs with your regulators, ± 12 VDC and ± 15 VDC
- Additional isolated single output gives you 5VDC after regulation
- Chassis mount
- A low noise alternative to multi-output switchers
- Dual bobbin construction
- UL recognized File # E146472
- Approved to CSA 22.2 No. 66
- TUV approved
- Custom versions also available



Part Number	DC Output		VA	Suggested Components					(C ₂ , C ₄ , see Note 1)		
	Primary 50/60 Hz	Regulator 1		Regulator 2	C ₁	C ₂	IC1 ¹	IC2 ²	IC3 ³	D1 ⁴	D2 ⁴
PA41-25-512	115.230V	5V @ 1.25A	± 12 V @150MA	25	4.1 KMFD	600 MFD	LM-323K-5	LM-340K-12	LM-320K-12	PE20	PF20
PA41-25-515	115.230V	5V @ 1.25A	± 15 V@130MA	25	@ 50 VDC	@ 50 VDC	LM-323K-5	LM-340K-15	LM-320K-15	PE20	PF20
PA41-43-512	115.230V	5v @ 2A	± 12 v@300MA	43	8 KFMD	1.1 KFMD	LM-323K-5	LM-340K-12	LM-320K-12	PE20	PF20
PA41-43-515	115.230V	5v @ 2A	± 15 v@250MA	43	@15 VDC	@50 VDC	LM-323K-5	LM-340K-15	LM-320K-15	PE20	PF20
PA41-80-512	115.230V	5v @ 3.5A	± 12 v@600MA	80	10 KMFD	2.1 KMFD	LM-338 ²	LM-340K-12	LM-320K-12	PP20	PF20
PA41-80-515	115.230V	5v @ 3.5A	± 15 v@500MA	80	@ 15 VDC	@ 50 VDC	LM-338 ²	LM-340K-15	LM-320K-15	PP20	PF20

Note:

1. Output capacitors C₂ and C₄ are required to stabilize regulators. Values can be 1 MFD min. tantalum or 10MFD min. electrolytic, 20V min.
2. LM-338 is an adjustable regulator and MFR's specifications (National Semiconductor) should be consulted for values of external components.
3. All ICs are National Semiconductor types.
4. All bridges are EDI types.



VA	L	W	H	A	B	C	Terminals	Style	Size	Screw	Lbs.	
25	213/16	17/8	25/16	2	11/8	5/16	3/16 (.187)	C	23/8	—	#6	1.25
43	31/8	21/16	211/16	21/4	11/8	5/16	3/16 (.187)	C	213/16	—	#6	1.6
80	21/2	23/8	3	—	13/8	5/16	3/16 (.187)	B	2	23/16	#6	2.8